



HIKES AND MOUNTAIN BIKE TOURS

SEVERAC D'AVEYRON

6 tours to discover hikes in the Causse de Sévérac et de la Haute Vallée de l'Aveyron



SOME ADVICES BEFORE YOUR DEPARTURE ...

1/ CHOOSE YOUR HIKE

All hikes in this booklet are judged “easy level”, between 2h15 and 3h30 of walk.

Before your departure, take care of the kilometers number and height difference: a precaution to walk without troubles!

Time is given as an indication, for a average walk of 3.5km/h, without break, stop and depends of your path of approaching the hike : relax walk, discovery, photos, sportive,...

2/ UNDERSTAND AND FOLLOW THE BEACONING :

The 6 hikes are marked in yellow. You can meet other colors of beaconing in your path : you don't have to take care of them.

3/ FOR A SECURE HIKE :

Stay on the marked path

Respect private property

Close barriers and fences after your passage

Keep dogs on leash, more next to farms and herds

4/ HIKER EQUIPMENT

Good walking shoes and adapted socks

A bag pack

Sufficient water

A warm or rain clothing

In summer: a cap, solar cream, sunglasses

Camera for memories of a nice walk ...

Nature and landscapes are our first wealth: RESPECT THEM !

Take away your waste with you, respect local fauna and flora!

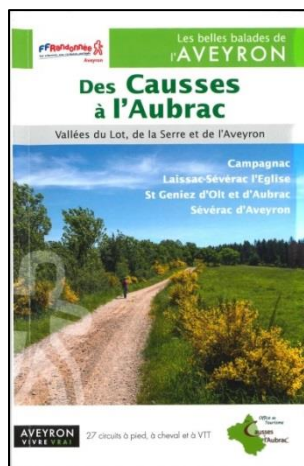
And especially, take pleasure and let yourself go to contemplation!

Information :

A hiker use beaconing and index cards with his own responsibility and stay the only accidents responsible which he could be victim, but also damages which he can generate !

HIKE IN THE SEVERAGAIS COUNTRY IT IS ALSO...

THE GUIDEBOOK « DES CAUSSES À L'AUBRAC »



On sale at the tourism office - 7€

27 walk, mountain bike and horses tour

To discover a larger territory :

Campagnac / Laissac - Sévérac l'Eglise / Saint Geniez d'Olt et d'Aubrac / Sévérac d'Aveyron

HIKES « DES CAUSSES A L'AUBRAC »

Find also other tours in the form of guidebooks on sale in **Laissac**, **Saint Geniez d'Olt** and **Sainte Eulalie d'Olt** tourism offices, to hike in the Aveyron valley, Serre valley or Lot valley, or in Aubrac !

WITH A PROFESSIONAL MIDDLE MOUNTAIN GUIDES :

LE BUREAU DES ACCOMPAGNEURS

Julien Mélo - 10 rue de la Grande Armée Sévérac-le-Château 12150

Sévérac d'Aveyron - www.bureaudesaccompagneurs.fr -

julien.melo@orange.fr - 06.75.41.54.51



LA MAISON DES ACCOMPAGNEURS

Jérôme Chayriguès - Le Couderquet -

Buzeins - 12150 Sévérac d'Aveyron - 06.82.84.94.78 - www.maison-des-accompagneurs.fr - maisondesaccompagneurs@orange.fr



REVE ET RANDO

Nathalie Decroix - 8, rue Amaury de Sévérac - Sévérac-le-Château - 12150

Sévérac d'Aveyron - 05 65 47 90 87 - 06 15 99 01 78 - reveetrando12@orange.fr

- reveetrando.e.monsite.com



ACROSS LE CAUSSE

Hike from « Huguies »

Time:	2h30
Distance :	9.5 kms
Difficulties :	*
Height difference :	150 m
Colour code :	Yellow
IGN map :	1/25000° n° 2539 East
To have :	Huguïès, bread oven and Bellas fountain

Acces itinerary from departure point :

De Sévérac-le-Château, prendre la D995 direction « Le Massegros ». Après « Saint Dalmazy », et avant le carrefour pour la direction « Huguïès », se garer à gauche sur le grand parking.

Tour description :

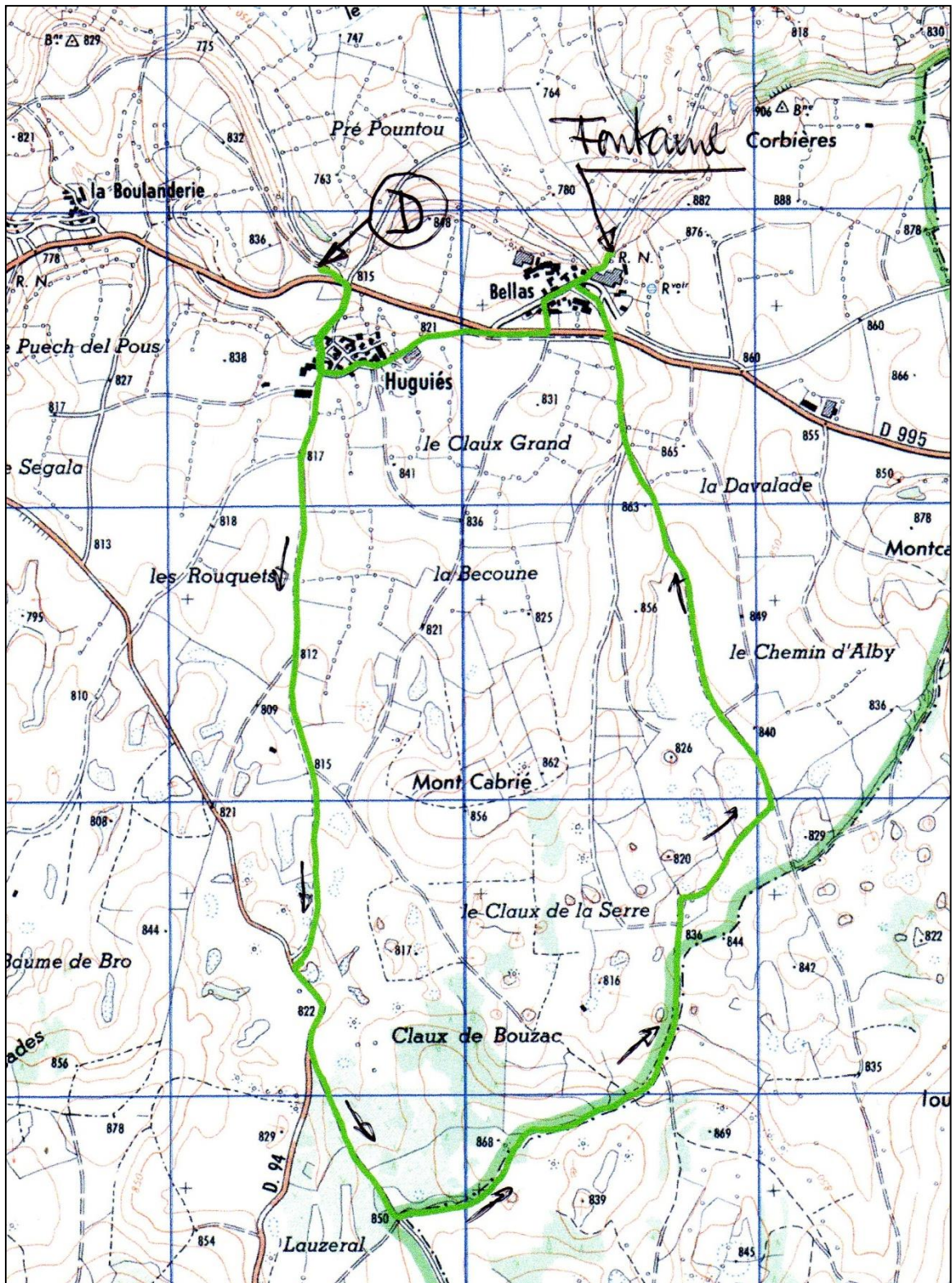
- ✓ From carpark, cross the D995 and turn right to “Huguïès”. Follow the beaconing and at the bottom of the village, take the path in front of you to the D94,
- ✓ Turn left and take the D94 to 200m. At the crossroads, follow “Recoules de l’Hom” direction, to the left,
- ✓ 300m after, take the dirt path to the left,
- ✓ Keep going straight to the crossing and take the left,
- ✓ When you are at the D995, cross under the road, take the left in the “Bellas” village, you will find the bread oven and fountain restored by inhabitants,
- ✓ Return to the D995, cross it and turn right to “Huguies”.



Horse ride on the Causse



A « jasse » typical house of the Causse



CORNUEJOULS – BUZAREINGUES

Hike from Cornuéjoul's

Time:	2h30
Distance :	6.5 kms
Difficulties :	*
Height difference :	150 m
Colour code :	Yellow
IGN map :	1/25000 ^e n° 2539 West
To have :	Dolmens, Cornuejoul's wash houses, Buzareingues' castle

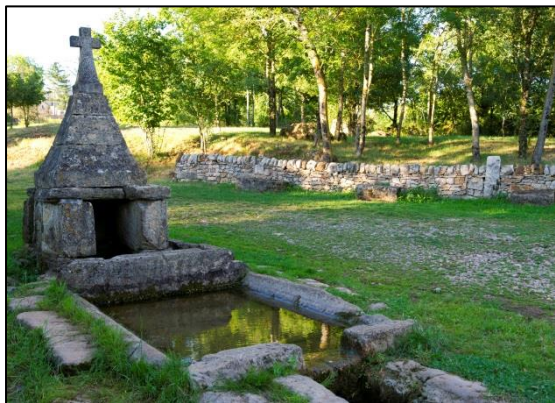
Thanks to respect private property

Acces itinerary from departure point :

From Sévérac-le-château, take the RN88, which goes to Rodez Just before the railroad crossing, turn right. Enter in Cornuéjoul's and park your vehicle next to the church.

Tour description :

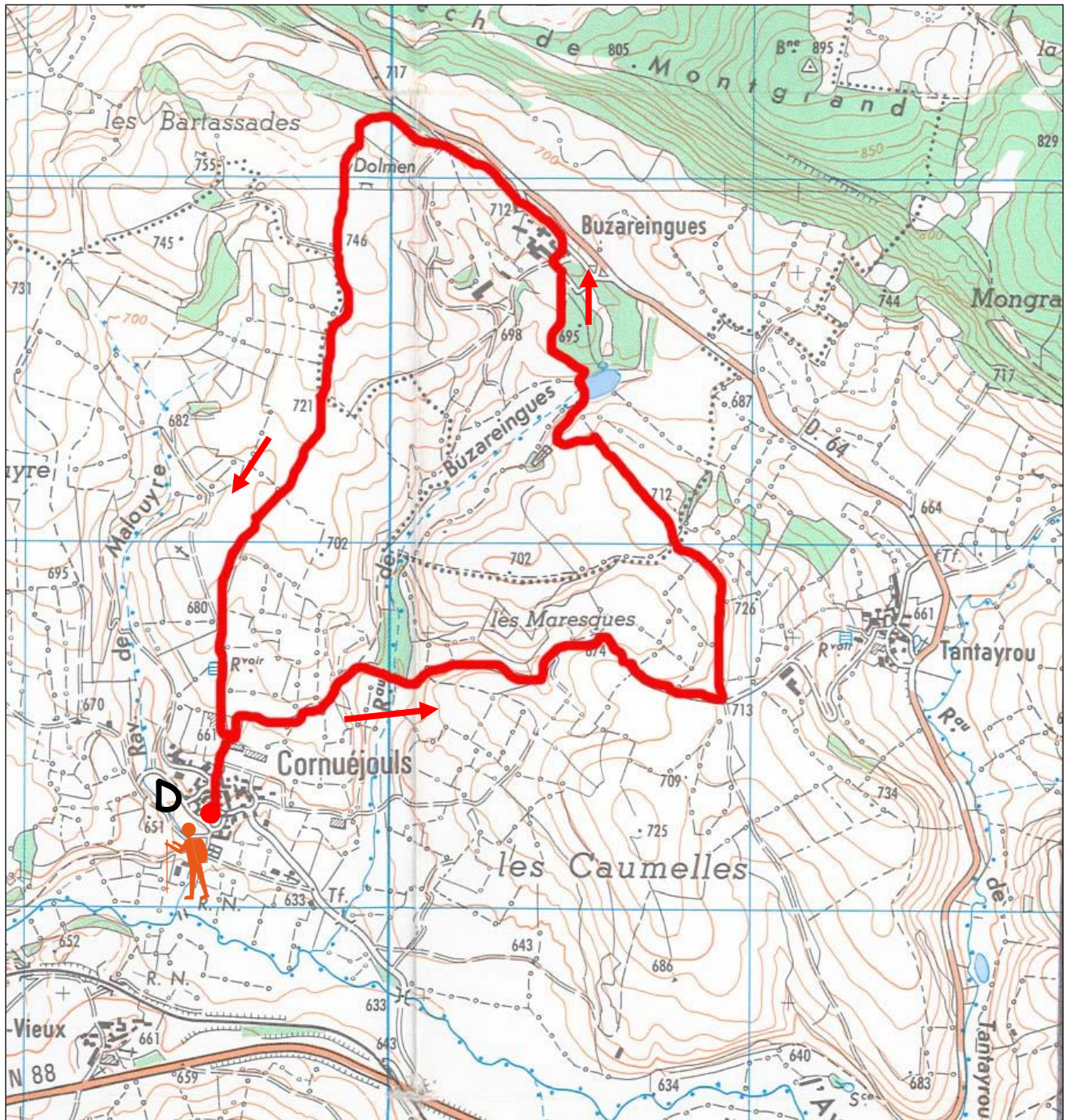
- ✓ Take the street which ascend and at the exit of the village, take the path on the right.
- ✓ Continue and cross the “Buzareingues” stream. Ascend to the crossing.
- ✓ Take the path to the left . Continue to “Buzareingues” removing a small lake on the right.
- ✓ In “Buzareingues”, follow straight ahead. At the height of the last agricultural building, take straight ahead the rock path along the quarry. 150m further, a broken dolmen on your left. A little bit more further, follow the dolmen signs taking the little path which climb, to “Cornuéjoul's”.
- ✓ Go down in the village to the church. Get around the church to go down along the cemetery to the beautiful wash-house, next to the agricultural building.



Cornuéjoul's fountain



Buzareingues castle



THE OLIP VALLEY

Hike from Recoules-Prévinquières

Time:	3h30
Distance :	12.5 kms
Difficulties :	*
Height difference :	300 m
Colour code :	Yellow
IGN map :	1/25000 ^e n° 2539 West
To have :	Recoules-prévinquières castle, flowered village and Saint-Grégoire church (XII century), Méjanel castle, Vallée Clause chapel (XV century)

Acces itinerary from departure point :

From Sévérac-le-château, take the RN88, which goes to “Rodez”. At the roundabout of the petrol station, turn left to Recoules-Prévinquières. In the village, go straight ahead to join the campsite (direction Lavernhe). Carpark and departure point in front of the tennis court.

Tour description :

Facing the campsite entrance, take the path on the left and continue on the right at the crossroad. Take the first path on the right to join the “Courry” hamlet.

300m after the village exit, at the stone cross, take the right path and go down to “Saint-Grégoire” village.

At the exit of the village, at cemetery, go right and join the D511. Pass on the bridge and 800m more further, turn right, to “Les Aumières”. Continue to “Méjanel”.

Cross the village square and take the path and the bridge on the stream to discover the “Notre Dame de la Vallée Clause” chapel.

From the chapel, take the path which mounted and turn right to “Pilous”. To “Pilous”, join the road on the right.

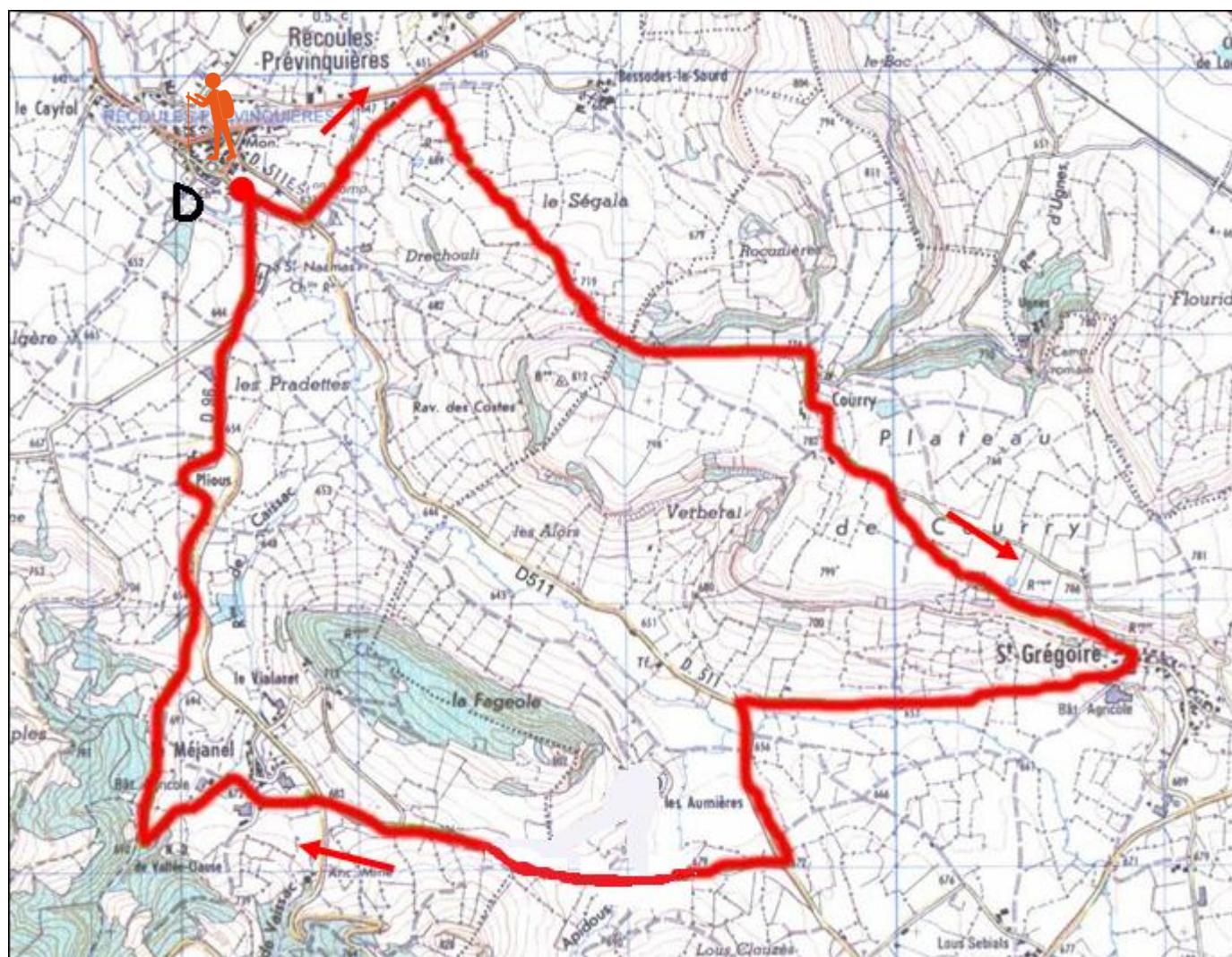
Follow the road to the village of “Recoules” and turn right to the campsite.



Recoules Prévinquières castle



Notre Dame de Vallée Clause chapel



THE CRETES TOUR

Hike from Sévérac-le-Château

Time:	3 hours
Distance :	10 kms
Difficulties :	*
Height difference :	300 m
Colour code :	Yellow
IGN map :	1/25000° n° 2539 West
To have :	Saint Chély church

Acces itinerary from departure point :

Departure from the “Les Calquières” campsite, in Sévérac-le-château.

Tour description :

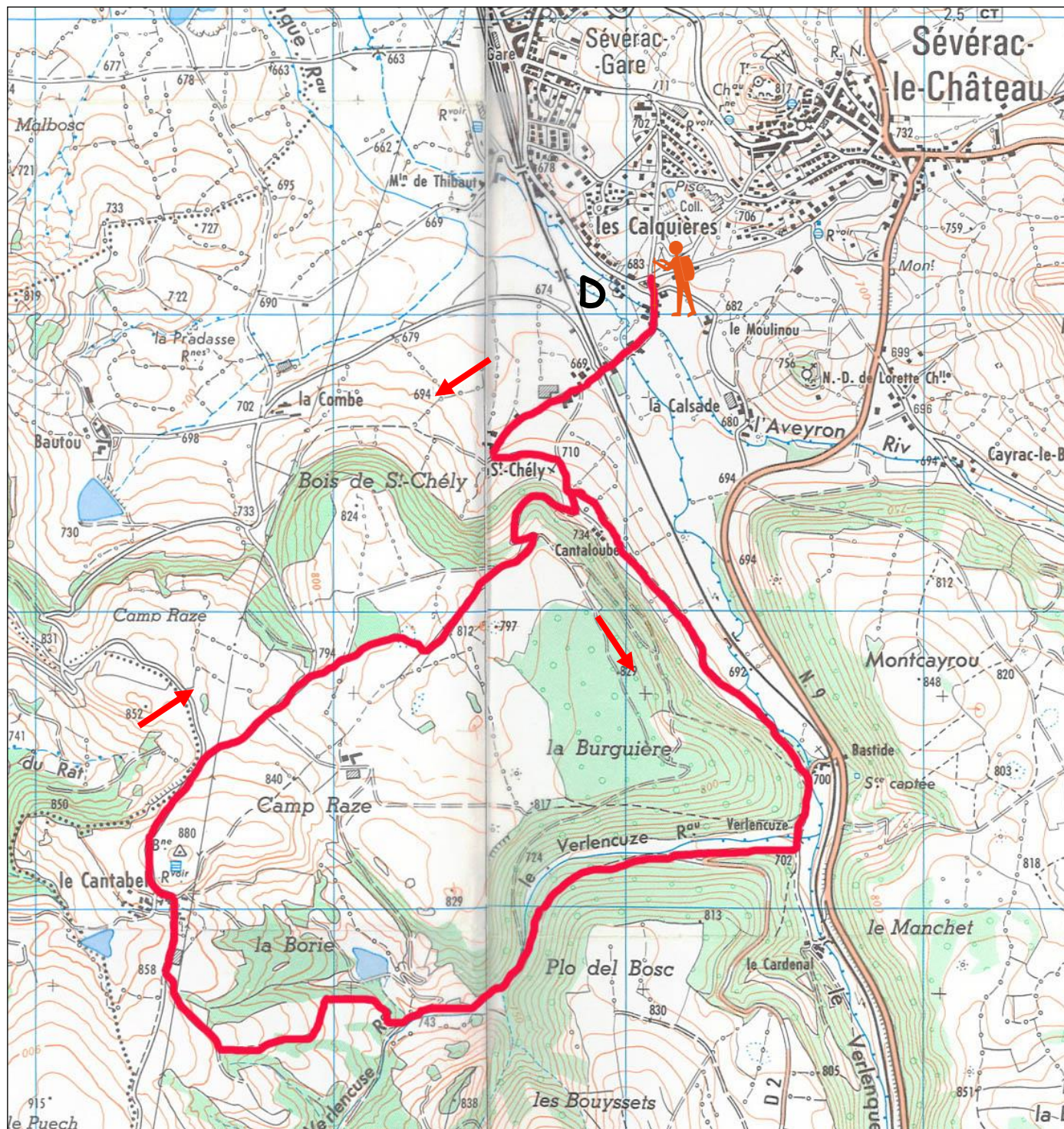
- ✓ Go down straight ahead the road to « Saint-Chély » (roman church, Cantaloube’s farm). In the village, turn left and stay left to the D2. Turn right and follow it while 500m.
- ✓ At the crossing, take the second path on the right to ascend to “le Cantabel”, leave to the right a lake.
- ✓ Cross the village, climax at 880m, on the left admire a magnificent view on the valley and Sévérac-le-château. Take the first road on the right and the second path on the right. Continue straight ahead to join “Saint Chély”
- ✓ Return to the campsite.



Saint Chély church



**Emma Calvé in
« Carmen »
de Bizet**



TO THE LOZERE

Hike from Blayac hamlet

Time:	2h30
Distance :	8.3 kms
Difficulties :	*
Height difference :	210 m
Colour code :	Yellow
IGN map :	1/25000 ^e n° 2539 West
To have :	Round fountain in Blayac, Lavogne, bread oven in Recoux

Acces itinerary from departure point :

From Sévérac-le-château, take the D235. You will arrive at the crossroad direction Blayac, hamlet “Pont de Blayac”. Park your vehicle on the big field on the left.

Tour description :

From Sévérac-le-château, take the D235. You will arrive at the crossroad direction Blayac, hamlet “Pont de Blayac”. Park your vehicle on the big field on the left.

Tour description :

From the carpark, go to the village and pass the fountain square at the center of the hamlet.

Go straight ahead to the top of the village.

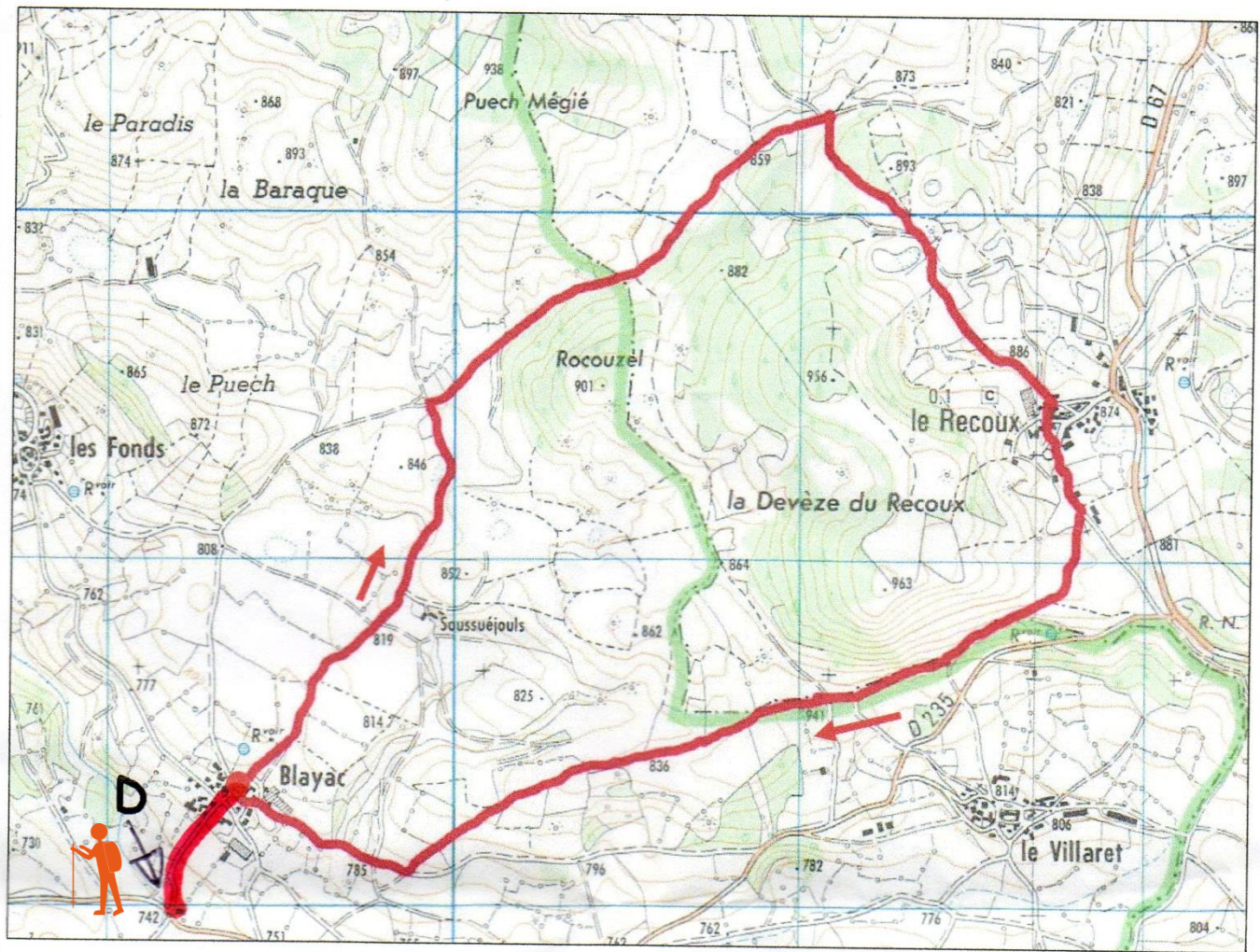
Leave “Soussuéjoul’s” houses on your right and continue straight ahead to the crossroad

Turn right to the next crossroad and turn right again.

Go to the Recoux (Lozère), cross the caussenard village build on the rock. Pass in front of the bread oven and continue to the church. At the cross, return to the path to “Blayac”. Admire the magnificent view on “Le Villaret”

Continue straight ahead leaving 3 paths on your left.

At the crossing, take the path on your right to join Blayac.



Recoux church

Sheeps on the Causse



THE AVEYRON SOURCES

Hike from Sévérac-le-Château

Time:	3 hours
Distance :	9.8 kms
Difficulties :	*
Height difference :	250 m
Colour code :	Yellow
IGN map :	1/25000 ^e n° 2539 East
To have :	Aveyron sources, Sermeillets : castle and view on the Aveyron valley, Notre Dame de Lorette chapel

Acces itinerary from departure point :

In Sévérac, join the campsite “Les Calquières”
Carpark and departure in front of the campsite.

Tour description :

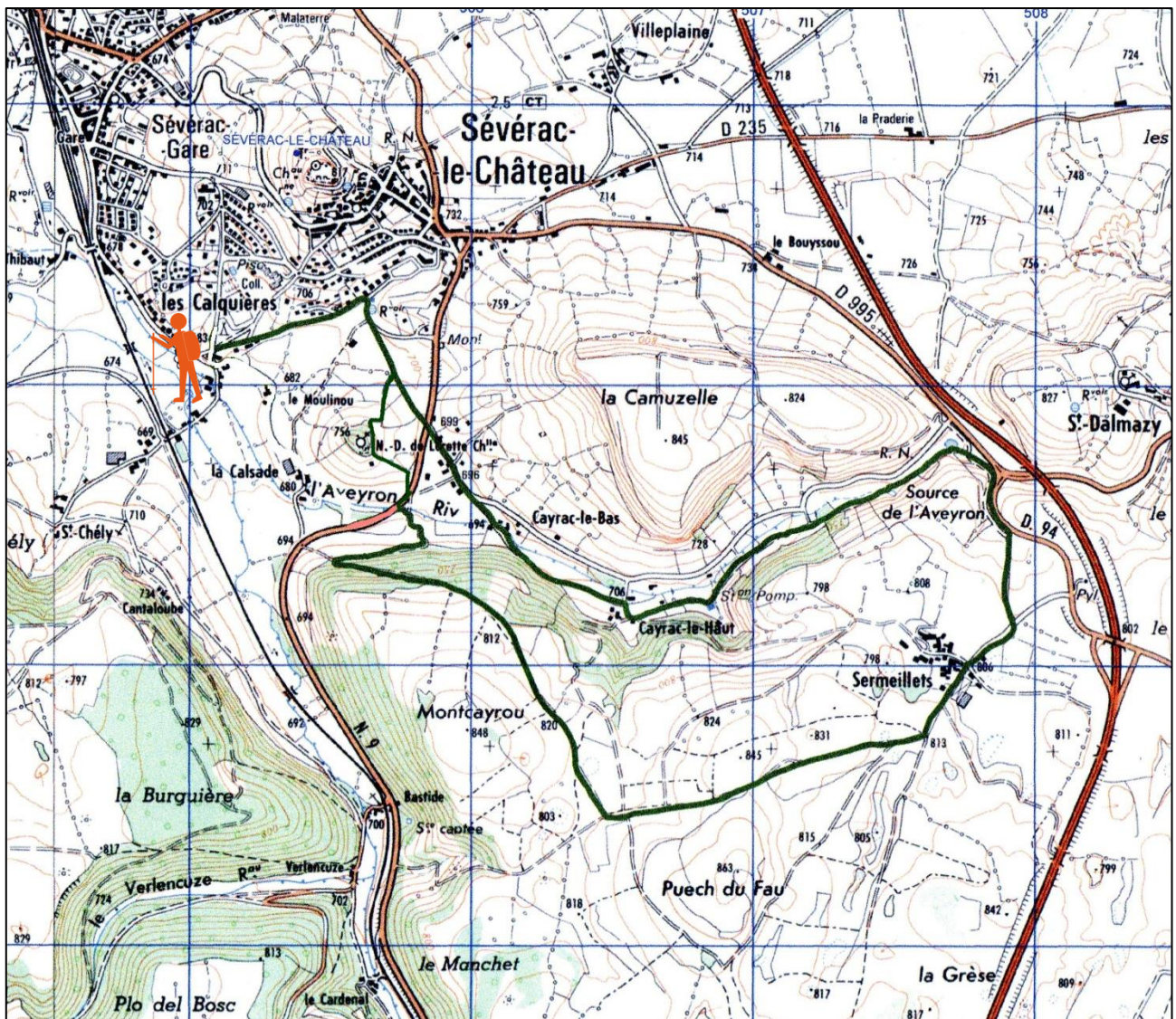
- ✓ From campsite, turn left. At the cross, take the dirt path to the RN9, Cross the road, to “Cayrac le Haut / Les Sources de l’Aveyron”
- ✓ Go right to the fork, cross the stream Aveyron and follow to the sources. Continue to the D94 and turn right, to “Sermeillets”. In the village, take right to discover beautiful stones and the valley view.
- ✓ Return on your steps straight ahead and turn right at the fork. Leave a path on your right and take the second.
- ✓ Arrive to the road D809, cross the D809, take the first path to the left to “Notre Dame de Lorette”. Follow this path to the road and join the campsite



« Les Sources de l’Aveyron »

Notre-Dame de Lorette chapel





SEVERAC D'AVEYRON



Have a good hike in Sévérac d'Aveyron !

Office de Tourisme Des Causses à l'Aubrac - bureau de Sévérac
5, rue des Doves
12150 SEVERAC D'AVEYRON
05 65 47 67 31 - severacdaveyron@causses-aubrac-tourisme.com
www.causses-aubrac-tourisme.com

Price : 2 €

Crédits photos : ©Florent Deltort photographe, ©Office de Tourisme Des Causses à l'Aubrac